

LEMON BAY NEWSLETTER CONSERVANCY

WINTER 2014 • VOLUME 44 • ISSUE 2

for the **preservation, protection and acquisition** of **natural areas** important in **maintaining the ecological balance** of **Lemon Bay and adjacent waters**

LBC President Jim Cooper Salutes a Banner Year.



In This Issue

From the President	1
Amazon Smile	3
Educators at Wildflower	3
What's Up in the Watershed	3
Hidden Lake	5
Special Thanks, Trail Keepers	6
Annual Meeting Announcement	6
Butterfly Habitat is Thriving	7
Special Member Events	8
Bird Checklist for Wildflower	8
Nature Outings Schedule	9
Toast to the Coast	11
Membership and Donation Form	11
Leaving a Legacy	12

LETTER FROM THE PRESIDENT Today's Success and Tomorrow's Plan

On behalf of Lemon Bay Conservancy, my heartiest thanks to all our members, volunteers, donors, sponsors and environmental partners! Your generous donations and hands-on support have made 2014 a banner year! Our successes in 2014 include:

- Introduction of three new “safari” brochures and tours at Wildflower Preserve that focus on common plants and animals in the uplands, freshwater wetlands and estuarine. - A project funded by the Charlotte Harbor National Estuary Program (CHNEP).

- Ongoing invasive plant removal and new native plantings at Wildflower Preserve; funded in part by a grant from the USDA's Natural Resource Conservation Service.

- Recognition as one of Field & Stream magazine's “10 Best Volunteer Conservation Programs in the U.S.” for our great variety of programs at Wildflower Preserve.

- Being named Conservation Sponsor for the 2014 Boca Grande Kids' Tarpon Fishing Tournament and receiving an \$8,600 conservation sponsorship grant from Boca Grande Charities, Inc. to initiate new STEM (Science, Technology, Engineering and Mathematics) educational programs at Wildflower Preserve.

- The introduction of new management software in our LBC office to better serve our members and the continued

continued on page 2



OFFICERS
Jim Cooper

President
941.830.8922
president@lemonbayconservancy.org

Percy Angelo
Vice President

941.830.8922
vp@lemonbayconservancy.org

Hilary Dahms
Secretary

941.830.8922
secretary@lemonbayconservancy.org

Walter Meanwell
Treasurer

941.830.8922
treasurer@lemonbayconservancy.org

DIRECTORS

Eva Furner, Lew Hastings,
Vickie Keidel and Irene Slattery

NEWSLETTER

Hilary Dahms / Committee Chair

Norman S. Hotz / Lakeside Studio
Creative Services
941.408.7923

©2014 Lemon Bay Conservancy
No portion of the content may be reproduced without the express permission of the Lemon Bay Conservancy and/or Lakeside Studio

Lemon Bay Conservancy, Inc.

2980 Placida Rd., Suite 201
Englewood, Florida 34224
941.830.8922
lbconservancy@comcast.net

Stay In Touch at our Website
www.lemonbayconservancy.org

enhancement of our LBC website and social media connections.

- The start of the design phase of the Southwest Florida Water Management District (SWFWMD) cooperative funding project to restore and enhance the creek system, freshwater wetlands and uplands within Wildflower Preserve.

- The completion of phase one of our successful, first-of-its-kind Juvenile Tarpon Research Program in partnership with the Bonefish & Tarpon Trust. With the help of many dedicated LBC volunteers, over 1,000 juvenile tarpon DNA samples were taken in our tidal ponds at Wildflower Preserve. Project leader JoEllen King Wilson is now completing her University of Florida master's thesis documenting the two years of research and we look forward to seeing her completed report shortly.

As we enter 2015, we have an exciting array of nature outings, special member events and new projects planned. Inside this newsletter, you'll find a listing of the many free, public nature tours being offered by our excellent team of volunteer guides. You'll also find details on our upcoming Toast to the Coast fundraiser and two fun special events just for LBC members, a member morning at Wildflower Preserve and a boat adventure with Dr. Bill Dunson.

New LBC projects on the horizon include a fish sampling program at Hidden Lake on Thornton Key, initiation of phase 2 of the Juvenile Tarpon Research Project at Wildflower Preserve, and pioneering a new series of hands-on environmental educational tours and programs with L.A. Ainger Middle School and Lemon Bay High School to help better educate our youth – our future!

As an LBC member, you can be proud to be a part of the LBC legacy – making permanent positive differences right here in our backyard. Through your support, you enable LBC to instill conservation values by educating adults and children; to protect endangered game fish; to sustain Wildflower Preserve's incredible natural resources; and to advocate for environmental causes. LBC directly improves the quality of our lives here in paradise.

If you haven't done so already, please renew your membership now and encourage your friends to join. You may wish to consider other longer-term sustained giving opportunities for LBC as outlined by Vickie Keidel, Endowment Chairman, in her article on charitable giving in this newsletter. LBC represents hundreds of voices, and together we make a difference!

Best wishes for 2015! I hope to see you soon at one of our fun events!

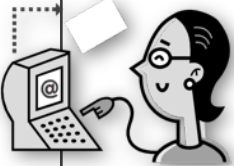
Amazon Smile

The holiday giving season is fast approaching, and Lemon Bay Conservancy would like our members and supporters to know about a new and easy way to support the Conservancy through the AmazonSmile Foundation. AmazonSmile will donate 0.5% of the purchase price of every on-line purchase you make through its **smile.amazon.com** site to Lemon Bay Conservancy. This site features the same products and prices as the regular Amazon site with the added bonus of offering a donation to your selected charity. If you have an existing Amazon

account, your account settings, wish lists and shopping cart will remain the same. So, while

you're doing your on-line holiday shopping, you can help support Lemon Bay Conservancy **at no added cost to you!** Simply go to **smile.amazon.com** and click to select Lemon Bay Conservancy as your charity of choice before you begin to shop. After registering, a donation will be made to the Conservancy for every purchase you make. This is an on-going program that will continue to benefit our cause this holiday season and every day of the year.

Thanks so much for your support!



Educators at Wildflower



Educators listen intently as Bill Dunson describes field research opportunities.

PHOTO © EVA FURNER

On Tuesday, November 4, eleven teachers and administrators from LA Ainger Middle School and Lemon Bay High School walked the trails at Wildflower Preserve with two volunteer naturalists and trail guides, Dave Clayton and Dr. Bill Dunson and LBC Board members Eva Furner and Hilary Dahms. The purpose of their visit was to become familiar with the natural features of the Preserve that they will be using as an outdoor laboratory for future projects and field studies.

As the group walked and observed, ideas flowed. Students of all ages from 6th to 12th grade will be able to experience first hand the unique variety of habitats and plant and animal species in our region, to learn water sampling techniques, data gathering and use of the scientific method to approach new questions. There will be opportunities to do in-depth studies of plants, animals and birds that will supplement the curriculum studies at the high school and middle school level. LBC is excited to partner with our local educators as they train the scientists and conservationists of the future!

What's Up in the Watershed

From time to time we plan to update our members on conservation and environmental happenings in the larger watershed. Two recent developments are of interest.

Comp Plan Rewrite - On September 23rd, the Charlotte Commissioners adopted a major rewrite of the County Comprehensive Plan.

continued on page 4

WATERSHED *continued from page 3*

The rewrite removed many of the County protections for wetlands and other environmentally sensitive lands.

The rewrite also eliminated many of the rules limiting the ability to transfer density. A provision barring the transfer of density to the Coastal High Hazard Area (CHHA), (which is much of the coastal area of Cape Haze) was amended to bar only “net” increases in CHHA density.

The County changes have been appealed by the Friends of Cape Haze and the Sierra Club, and the appeal is ongoing.

The County argues that the protections removed still exist in the County’s land use regulations and that taking them out of the Comp Plan allows the Commissioners more flexibility. The challengers say that the state statutes require the protections to be in the Comp Plan precisely because there needs to be some standard for County actions regarding density and environmental protection. Further, if protections for

wetlands are left to state and federal authorities we run the risk that no enforcement authorities will be available when wetland destruction is observed, as happened recently on Manasota Key.

As for the CHHA density question, the challengers are concerned that the County could move density from the north end of Gasparilla Road to the Placida area, where it would have serious impacts on evacuation times from Placida and Boca Grande.

A hearing is tentatively scheduled for December 17-19.

Donation of Peaceful Horse Ranch -

On a happy note the transfer to the State of Peaceful Horse Ranch at the confluence of the Peace River and Horse Creek has finally been completed. Three environmental groups, Sierra Club, ManaSota-88 and People for Protecting Peace River (3PR) challenged the US Army Corps of Engineers permit to the Mosaic Company for the South Fort Meade Mine in Hardy County. The litigation was settled with an agreement by Mosaic to provide additional preservation along the Peace and to provide additional mitigation for wetlands destroyed in mining by the purchase of Peaceful Horse Ranch (PHR) for a state preserve. Funding was also provided for acquisition of conservation easements in sensitive areas. PHR was on the State’s Florida Forever list of environmentally desirable parcels but could not be acquired directly by the State because the State

Florida Forever funding, provided by documentary stamp fees on real estate transactions, was not appropriated.

The PHR parcel is superb, involving some 4400 acres, largely made up of wetlands and wildlife habitat with 7 ½ miles of frontage along the Peace and 5 ½ miles along Horse Creek, the most pristine creek remaining in the watershed.

The transfer to the State was held up for some time as the State park system decided it didn’t want the parcel, even with a large maintenance fund, and another recipient had to be found. Eventually the State Division of Forests, under the Department of Agriculture and Consumer Services agreed to take the parcel. The total transaction is valued at more than \$12 million. The intention is to manage the property for conservation, with some limited hunting for participants in the Wounded Warrior programs.

This was an instance where the plaintiff environmental groups, the Conservancy of Southwest Florida (which acted to facilitate the transfer) and Mosaic worked closely together to reach a great result. The protection of PHR, and the other properties set aside for preservation by Mosaic, will act to protect the Peace watershed, including downstream Charlotte Harbor, and wildlife corridors which depend on the watershed. Hopefully further acquisitions and conservation easements will continue this watershed protection effort.



Hidden Lake Trip Summary



Dave Blewell and Dr. Phillip Stevens boating to Hidden Lake.

On a perfect, sunny fall morning, in a light breeze with a falling tide, a dedicated FL Fish & Wildlife team, led by Dr. Philip Stevens, PhD and two seasoned research biologists, Dave Blewell and Jamie Darrow departed the Rum Bay dock at Palm Island Resort and boated over to Thornton Key to sample LBC's Hidden Lake Preserve. LBC member Rebecca DeRosa, a regular Wildflower juvenile tarpon fish sampler and local fishing guide and LBC President Jim Cooper joined the F&W team to observe and take pictures of this milestone event. This expedition represents the first ever scientific recording of Hidden Lake's many valuable fish species and marine creatures that live within the safety and natural

protection provided by the thick scenic mangrove nursery. These coastal mangrove areas, which are rapidly disappearing, are often referred to as "essential fish habitats," because they allow these various species of game fish to grow up and thrive in the safety of their juvenile nursery during their first two years of development. We all were excited to be observing and recording this event.

We were pleasantly surprised to see how clear the creek's outflowing water was in the dropping tide. The creek is completely surrounded by beautiful, dense undisturbed mangroves growing all along the banks and extending overhead to provide a thick, shady canopy for the creek. It is a

beautiful sight and a photographer's paradise! (See photo) Lemon Bay Conservancy is proud to be able to permanently preserve and protect the unique environment of Hidden Lake thanks to the generous donation of this property to our land trust by our partners in conservation, Dean & Gar Beckstead of Palm Island.

As we entered the clear waters of the Hidden Lake entry creek by jonboat and kayak, the team performed three 30-foot seine net samples. Each captured specimen was recorded and logged into the Fish & Wildlife state research database. Among the marine creek animals discovered were: mangrove crabs, and large and small blue crabs darting back and forth, hiding in the sandy creek bottom, and a tiny pink shrimp. The team moved further into the lake where they performed four more sampling efforts; two using a large mesh 140-ft net and two using a smaller mesh 70-ft net. Among the noteworthy nursery-size game fish captured in the creek were the prized and clever juvenile Snook, ranging in age from one month to one year old along with Mangrove Snapper, Irish Popano and Sheepshead found in the Lake. The team also recorded several varieties of healthy baitfish.

The results of the water sampling in the creek and lake revealed a seawater salt level content of 34 PPT, which the staff noted was the same as the nearby Gulf. This makes Hidden

continued on page 6



Baby Snook netted at Hidden Lake

Lake an ideal nursery to acclimate these game fish to the Gulf waters where they will live once they reach approximately two years of age.

All in all, the day's plentiful sampling efforts by the F&W team netted more than 180 fish with a variety of about 20 saltwater species including several juvenile game fish. All were found to be in good health and thriving in Hidden Lake's ideal natural mangrove-lined fish nursery habitat. Summarized below are F&W's successful fish sampling efforts at Hidden Lake and Creek. Species are listed along with the numbers caught.

Small Mojarra.....	175
Irish Pompano.....	47
Mosquitofish	11
Silversides	10
Silver Jenny	10
Crested Goby	7
Striped Mojarra	5
Sailfin Molly	5
Blue Crab	5
Pinfish	3
Common Snook	3
Gray Snapper	3
Lined Sole	2
Gulf Killifish	2
Tidewater Mojarra	1
Pink Shrimp	1

Team LBC thanks Dr. Phillip Sevens, F&W's Team Leader and Director of the Charlotte County F&W Field Station and his two research biologists: Dave Blewell and Jamie Darrow whose hard work on Oct. 27th resulted in the collection of the wonderful list of species above, and marked the beginning of important monitoring at Hidden Lake for LBC. We again thank the Beckstead family whose continuing efforts in conservation provided this important site. We thank Adam Beckstead for facilitating the project by providing the kayaks, a jonboat and use of the docks and facilities at Palm Island. This was truly a cooperative effort on this milestone day for LBC and F&W: the first-of-its-kind F&W fish sampling of a "barrier

island" isolated tidal saltwater creek & lake system. The scientific results gathered validate that LBC's Hidden Lake Preserve on Thornton Key is indeed a rare and very special saltwater game fish nursery treasure.



Special Thanks to Our "Trail Keepers"

Through this year's long and hot "wet" season, our volunteer trail maintenance team has been at Wildflower Preserve once, and often twice, a week. They've put in long, hard hours mowing the trails and meadows, clearing branches along the paths and doing other preserve maintenance projects. Bob Fowler led the challenging branch clearing work and maintenance projects, while Scott Bremmer and Roy Ault took on the formidable mowing tasks. Thank you Bob, Scott, and Roy!

LEMON BAY CONSERVANCY

Annual Meeting

Tuesday, January 20, 2015
Cedar Point Environmental Park

Social: 6:00 - 6:30 Annual Meeting: 6:30 - 7:30
For more information please call 941-830-8922

Butterfly Habitat is Thriving

Under the leadership of Jane Wallace, Maura Qualls, and Ruth Wilson, the butterfly habitat at Wildflower Preserve continues to expand and thrive. On a recent fall morning, a quick count showed 38 different species of flowers and shrubs blooming in the various sections of the habitat!

The butterfly habitat is divided into different sections that demonstrate plants that can be used to attract butterflies in a variety of planting conditions. With support from the Charlotte Harbor National Estuary Program (CHNEP) and the Florida Native Plant Society, Jane started the butterfly garden in late 2010. The focus in the initial section of the garden was on native plants that would thrive in the moist environment along the drainage creek that flows into Verna's Pond.

The second section of the garden, the meadow, was started shortly thereafter. The native plants in this area demonstrate butterfly-attracting species that can be grown without irrigation in the sandy, low nutrient soils typically found in southwest Florida.

The third section of the butterfly habitat is entirely different. Created in 2013 with funding support from The Home Depot Foundation, this area uses purchased garden soil enhanced with peat and compost. We focused on filling the area with a mixture of perennial and annual



Monarch caterpillar on native milkweed at Wildflower Preserve.

Florida native and Florida-friendly plants in order to demonstrate a typical home garden for this climate.

The newest two sections of the butterfly habitat have been added in the past year. Using the existing soil, mixed with some improvements, these sections are focused on trees and shrubs that serve as both larval hosts and nectar sources for a variety of butterflies.

Jane continues to focus on plantings in the moist area of the garden. This summer, she used a \$250 micro-grant from the CHNEP to plant 80 native milkweed plants along the creek banks. Milkweeds are larval host plants for Monarch butterflies. The non-native milkweed, *Asclepias currasavica*, that is commonly used in gardens in our area blooms year-round. Scientists are concerned that the presence of

this variety providing year-round food is keeping Monarchs from migrating and increasing their susceptibility to disease. The preferred native milkweeds purchased through the grant are *Asclepias perennis*, White Swamp Milkweed, and *Asclepias incarnata*, Pink Swamp Milkweed. An ongoing goal for the project is to gather seeds from the initial plantings. The seeds will be used to create additional native milkweed areas in the preserve and will be offered to interested local gardeners.

Jane, Maura and Ruth work weekly in the butterfly habitat. They can always use help with weeding, planting, mulching, and other projects. If you'd like to help, stop by the Preserve on Monday mornings between 8 am and 10 am, or call the office for more information.

Special LBC Member Events

Two special events for Lemon Bay Conservancy members are scheduled in January and February. As you renew your membership for 2015, please let us know if you will plan to attend either or both of these special events.

Member Morning at Wildflower Preserve - 8 am to 11 am on Saturday, Jan. 17

LBC members are invited to come out and meet the volunteer gardeners, trail guides, and board members who are leading the transformation of Wildflower from golf course to nature preserve. The butterfly area will be open throughout the morning. A special birding walk will depart at 8:15 am. Short nature tours will begin at 9:15 am and 10:15 am. Several LBC board members will be on hand to answer questions and discuss future development projects. There is no charge for members to attend this event. Free coffee, tea and donuts will be provided.

Member Morning Boat Trip on Lemon Bay – 8:30 am to 11:30 am on Thursday, Feb. 19

Members are invited to join Dr. Bill Dunson for a pontoon boat excursion on Lemon Bay. We will depart from the Lemon Bay Tours dock at 1450 Beach Road

Bird Checklist for Wildflower



PHOTO © EVA FURNER

Volunteers Abbie Banks, Don Rippeon, Tom Duch and Gayle Duch have been conducting monthly bird surveys at Wildflower Preserve since December 2010. Thanks to their work and a compilation effort by Eva Furner, the “Wildflower Preserve Bird Checklist” was published this summer. The Checklist lists the 132 bird species recorded at the preserve through June 2014. Common habitats, frequency of sightings, and seasons seen are shown for each species.

Copies of the Bird Checklist are available at the entry kiosk at Wildflower Preserve and on the LBC website at www.LemonBayConservancy.org.



at 8:30 am. We have selected that date to coincide with a very low tide that should provide good opportunities for viewing shorebirds on the flats as we head south into Lemon Bay. If weather conditions permit, we will make a stop for a beach walk along the north end of Palm Island, adjacent to Stump Pass. Bill will lead the walk, pointing out interesting plants and animals along the way.

The fee for this three hour adventure is \$25 per member. “Individual” members may bring a guest for \$35. We anticipate that interest in this trip will be high. So, please consider reserving your seats along with your annual dues payment. In the case of inclement weather, we will reschedule the trip. If member demand for seats significantly exceeds the boat’s capacity, we will attempt to schedule a second excursion date.

Nature Outings: Winter 2014 - Spring 2015

All outings are free and open to the public.
Location information for the various outings is shown at the end
of the document. No pets or smoking please.
For additional information, contact Bill Dunson at 276-233-6364 cell or text,
or email wdunson@comcast.net

Dec. 18/Thur	Uplands & Wetlands Ecology at Myakka River State Park	9-11 am (MR)	Bill Dunson
	Join the fun as we walk a 3 mile Loop in the Myakka State Park with biologist Dr. Bill Dunson. Our walk will take us through a wet and dry riparian creek corridor. We will consider the changes that have occurred since pioneer days, mainly driven by a large decline in groundwater levels. Dr. Dunson will point out plants and animals as we walk. Bring drinking water and a shady hat. Call Bill for specific meeting directions 276-233-6364. State park entry fee \$6/vehicle. No fee for the outing. Jointly sponsored by LBC and the Sierra Club.		
Dec. 19/Fri	Plants and Animals: A Love Hate Relationship	9-11 am (WF)	Dave Clayton
	Animals need plants. Plants need animals. But, these are complex relationships, at times mutually beneficial while at other times detrimental to one or the other. Join local wildlife expert Dave Clayton to explore examples in the relationships of some of the flora and fauna of Wildflower Preserve.		
Dec. 29/Mon	Ecology of Wildflower Preserve	9-11 am (WF)	Dave Clayton
	Wildflower Preserve is a wondrous 80 acres of wetlands and uplands. This walk will explore its general ecology and its remarkable qualities.		
Jan. 10/Sat	Ecological Differences between Wildflower and Amberjack	9 am-noon (WF)	Dave Clayton/Bob Cooper
	Join expert naturalists Bob Cooper and Dave Clayton on a 2.5 mile round trip hike from LBC's Wildflower Preserve "south of the border" to adjacent, county-owned Amberjack Environmental Park. The differences in habitat types between these adjacent preserve areas are astounding, as are the ecological ties that bind them together. The amazing bird life in Lemon Lake cannot exist without the tidal flow up Lemon Creek and through Wildflower, yet the lake dries up completely in some months. Bring binoculars and wear good walking shoes. This is one of our longer hikes and usually takes approximately 3 hours. Co-sponsored by LBC and the Charlotte Harbor Environmental Center (CHEC).		
Jan. 24/Sat	Open House at Wildflower Preserve	8 am-noon (WF)	
	Mark your calendars to join us in celebrating the first five years of LBC's development of Wildflower Preserve. Visit information booths hosted by local environmental groups and participate in a series of nature walks.		
Feb. 7/Sat	Management of Wildflower Preserve	9-11 am (WF)	Dave Clayton
	A wildlife preserve is not an area locked up and then ignored. There are on-going management considerations: what habitat needs restoration or enhancement, how to control invasive plants and animals, what areas will be opened for public access. Join us for a walk around Wildflower Preserve while we discuss past, present and future management objectives and procedures.		
Feb. 12/Thur	Exploring Buck Creek Preserve	9-11 am (BC)	Bob Cooper
	Join naturalist Bob Cooper on a guided walk around the flatwoods, freshwater wetlands, and mangrove fringe at Charlotte County's Buck Creek Preserve. Jointly sponsored with the Charlotte Harbor Environmental Center (CHEC).		
Feb. 16/Mon	Barrier Island Ecology on Manasota Key	9-11 am (BP)	Bruce Dayton
	Walk from the Gulf of Mexico shore to a lagoon off Lemon Bay with ecologist Dr. Bruce Dayton at Blind Pass Beach. We discuss how water, wind, sand and living things interact to create our beautiful barrier islands. The biological emphasis will be on habitats. Included are beach, dune, coastal hammock and mangrove. This is a fairly easy stroll on the beach and the Duisberg Nature Trail. Meet at the Blind Pass Park sign across the road from the parking lot.		

LISTING CONTINUED ON FOLLOWING PAGE

Feb. 21/Sat	Ecological Differences between Wildflower and Amberjack	9am-noon (WF)	Bob Cooper/Dave Clayton
Join expert naturalists Bob Cooper and Dave Clayton on a 2.5 mile round trip hike from LBC's Wildflower Preserve "south of the border" to adjacent, county-owned Amberjack Environmental Park. The differences in habitat types between these adjacent preserve areas are astounding, as are the ecological ties that bind them together. The amazing bird life in Lemon Lake cannot exist without the tidal flow up Lemon Creek and through Wildflower, yet the lake dries up completely in some months. Bring binoculars and wear good walking shoes. This is one of our longer hikes and usually takes approximately 3 hours. Co-sponsored by LBC and the Charlotte Harbor Environmental Center (CHEC).			
Mar. 3/Tues	Birds and How to Manage for Them	8-10 am (WF)	Bill Dunson
Join Bill Dunson and a group from Peace River Audubon Society (PRAS) in exploring the different habitats of Wildflower Preserve and how each supports different populations of resident and migratory birds. Learn the common bird species and how to distinguish them by sight and sound. Consider how future plans will modify some of these wetlands and how these changes can be expected to affect the birds found here. Jointly sponsored by PRAS and LBC.			
Mar. 7/Sat	Common Butterflies & Dragonflies at Wildflower Preserve	10-11 am (WF)	Jane Wallace
The simplest way to master the identification of confusing butterflies and dragonflies is to focus on learning the most common 5-10 species. Jane Wallace, a leader in developing Wildflower Preserve's butterfly habitat, will introduce visitors to the butterflies and dragonflies found on a leisurely walk and provide additional information for enthusiasts to use on future walks.			
Mar. 21/Sat	Insects of Wildflower	9:30-11:30 am (WF)	Fred Santana
No one is more expert in introducing visitors to the world of insects than "Dr. BUG," Dr. Fred Santana. He will lead participants along the trail describing and identifying insects that are encountered or caught, introducing them to the insect diversity of the preserve. Enjoy the opportunity to identify and learn about their habits. Do NOT miss the occasion to learn about this important fauna. Note that the start time for this walk is 9:30.			
Mar. 28/Sat	Animal Diversity and the Future of Wildflower Preserve	9-11 am (WF)	Dave Clayton
Wildflower Preserve includes several habitats and a variety of animal species live in the preserve either permanently or seasonally. These animals have evolved numerous adaptations allowing them to not only survive but thrive in their specific habitat. Join Dave Clayton on a walk through the preserve with discussion about how future plans for Wildflower will enhance these habitats to benefit the native flora and fauna.			
Apr. 4/Sat	Ecology of Wildflower Preserve	9-11 am (WF)	Bob Cooper
Our very own master ecologist Bob Cooper will lead you on a hike around Wildflower Preserve and provide a very exciting account of the animals and plants found there.			
Apr. 11/Sat	Freshwater & Saltwater Ecology at Wildflower Preserve	9-11 am (WF)	Bob Cooper
Join Bob Cooper for a visit to the freshwater wetlands and brackish Lemon Creek at Wildflower Preserve with discussions of the major differences between the two habitats.			

LOCATION INFORMATION FOR THE NATURE OUTINGS

- WF** **Wildflower Preserve:** Outings depart from the parking lot, 3120 Gasparilla Pines Blvd., Englewood, FL 34224. The preserve is located just east of Placida Rd, Route 775, south of Englewood.

- BC** **Buck Creek Preserve:** 5350 Placida Rd, Englewood, FL 34224. The parking lot has been expanded during the summer.

- CSP** **Charlotte Sports Park,** 2300 El Jobean Rd., Port Charlotte, FL 33948. The entrance to Tippecanoe Environmental Park is at the rear of the stadium parking lot.

- MR** **Myakka River State Park,** 13208 State Rd 72, Sarasota, FL 34241. Admission \$4.00 - \$6.00. Approximately 45 minutes driving time from downtown Englewood.

- BP** **Blind Pass Park (Middle Beach),** 6725 Manasota Key Rd, Englewood, FL 34223. Located on Manasota Key. Meet at the Blind Pass Park sign across the road from the parking lot.

Note: Outing schedules are subject to change and additional events may be scheduled. To receive updates and reminders on upcoming activities, visit www.lemonbayconservancy.org and subscribe to "Lemon Bay Conservancy Nature Outing" e-mails.

MY CONTRIBUTION TO LEMON BAY CONSERVANCY

We invite you to support the Lemon Bay Conservancy's efforts to protect the inherent beauty of southwest Florida by becoming a member or making a donation to our Land Acquisition Fund. Thanks for your consideration and for your concern for the preservation of our natural heritage.

Lemon Bay Conservancy, Inc. Membership Application / Donation Form

Name _____ Address _____

City _____ State _____ Zip Code _____ Telephone (____) _____

e-mail address _____ Check this box to allow us to send future correspondence by e-mail

New Member Renewal

Yes, I would like to contribute toward preserving native wildlife habitat and open lands, as well as help protect Florida's threatened and endangered animal and plant life.

- \$35 Individual Member \$50 Family Member \$100 Patron Member \$250 Small Business Member
 \$500 Corporate Member \$750 Trustee of the Land \$1,000 Keeper of the Land
 \$2,500 Guardian of the Land \$5,000 Steward of the Land Other \$_____. Donation \$_____

Charge My Credit Card # _____ Exp. Date _____ Signature _____

3 digit security code _____ Master Card Visa

Please remember to include a matching gift form from your company, if applicable

Please make checks payable to: **Lemon Bay Conservancy, Inc.**

and mail to: **2980 Placida Road, Suite 201 Englewood, FL 34224**

You can also join and/or make your contribution on-line at www.lemonbayconservancy.org

or by calling our office at 941-830-8922

Thank you for your support. It is greatly appreciated!

LBC is a 501(c)(3) Non-Profit. Contributions are, in general, tax deductible. Please consult your tax professional if you have questions.

SAVE THE DATE!



7th Annual Toast to the Coast
Thursday, February 26, 2015
6-9 p.m.
Palm Island Resort

Lemon Bay Conservancy's annual fundraiser and auction, **Toast to the Coast**, will take place at beautiful Palm Island Resort on Thursday, February 26th. Everyone is *continued on page 12*

invited to cruise across the Intercoastal Waterway via the Palm Island ferry to experience an evening of **"Hidden Island Treasures"**. Enjoy the wonderful cuisine of Palm Island Resort and find some exciting and unique treasures among the many silent and live auction items donated by our loyal supporters!

There will be music, fun and friendship as we gather to support the Conservancy's ongoing programs to preserve and protect our coastal environment. Tickets are \$125 per person and include two drink tickets. A cash bar will also be available. As a special

added feature, a limited number of rooms at Palm Island Resort will be made available at a special rate for those guests wishing to spend the night.

Don't delay! Gather your friends and get a group together. Make your party reservations today by calling the LBC office at 941-830-8922 or visiting our website

www.lemonbayconservancy.org. Palm Island Resort reservations for overnight guests must be made directly through the resort office at 1-800-824-5412. Be sure to mention **"Toast to the Coast"** when booking your reservation. We look forward to seeing you at this special event!

Leaving a Legacy

Each year thousands of Americans choose to give back to their communities by making a donation to their favorite charity. This is the time of year that Lemon Bay Conservancy (LBC) reminds our supporters to renew their membership. Your membership donation gives LBC a greater ability to fulfill our mission and reach our goals. Examples of these are: Wildflower Preserve, tarpon research, environmental hands-on projects and educational programs for local middle and high school students. Additional programs are in various stages of development, and in 2015, we plan “members only “events. LBC depends on their liquid assets to survive downward economic trends and to maintain their existing programs and services. While gifts of

cash are the most common type of gift, many donors find it beneficial to make charitable gifts in other ways. Many may chose to make an annual pledge to LBC’s endowment fund. Endowments are permanent funds whereby only the interest each year is used for a specific purpose of the fund. The principal amount of the gift is invested for long term growth. Some may want to make memorial donations, while others may donate securities, royalties, art, personal and real property, bequests in wills, charitable remainder trusts, assignment of life insurance, and last but not least, volunteer their time. If one of LBC’s donors has a favorite cause or program, they may restrict funds to that program. They will be able to see the positive difference their gift can make.

To help you determine what giving alternatives may be a good fit for your personal financial and overall tax situation, talk with your financial advisor, tax advisor, and/or legal professional for guidance in initiating a charitable giving strategy. LBC follows the Guide Star guide lines with financial transparency to our donors. Every member of the LBC Board gives an annual donation. A representative of LBC is available to discuss giving opportunities that best fit your needs.

It is pretty astonishing to visit Wildflower Preserve and try to envision what was once a golf course. Thanks to the generosity of LBC’s donors and the hard work of the volunteers, the Preserve is a treasure in our community. Help LBC to protect the gems of our community and leave a legacy and example for future generations.

Ruby Tuesday Community Give Back Program

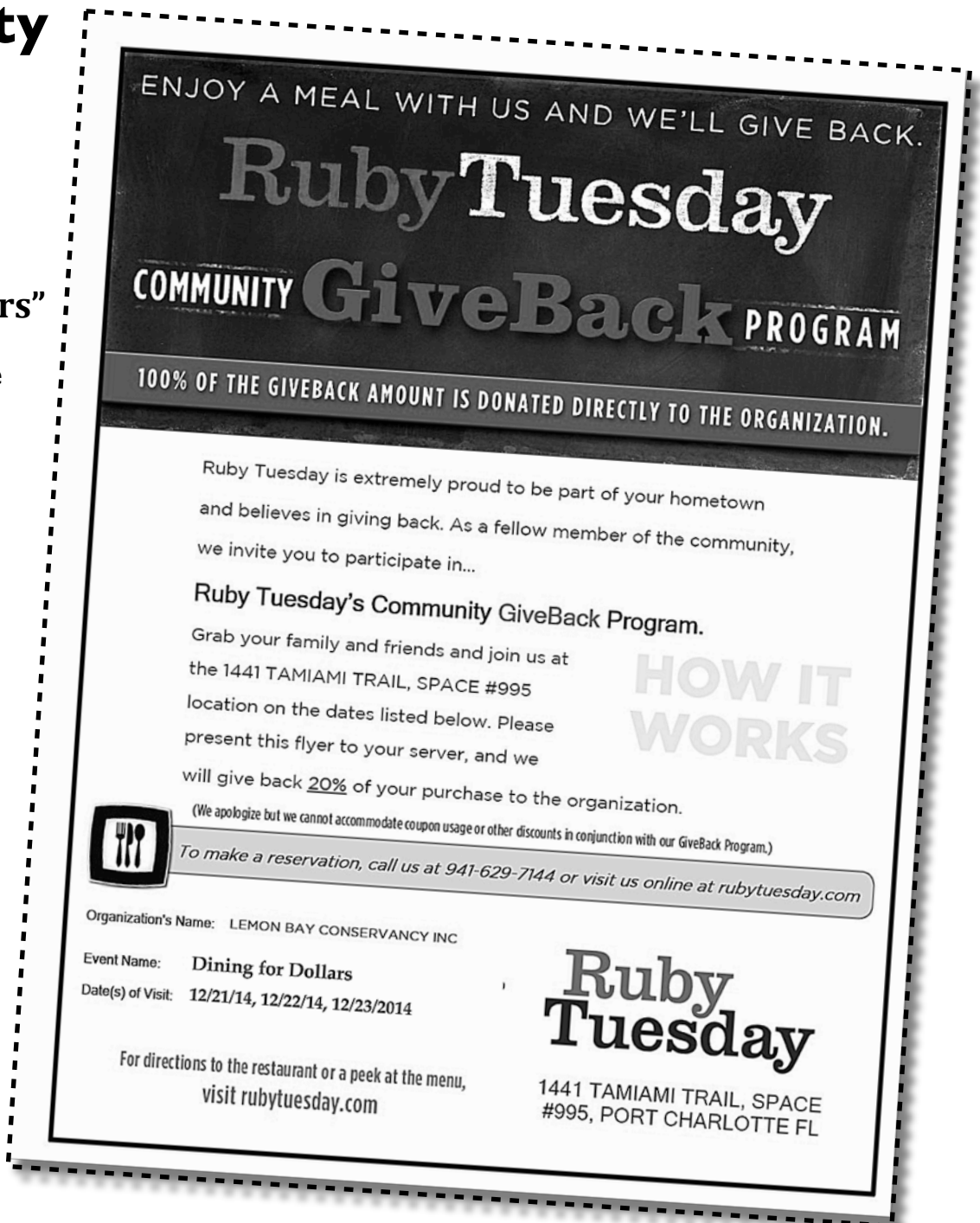
Lemon Bay Conservancy "Dining for Dollars"

Holiday shopping at the mall? Don't forget to check out Ruby Tuesday's special dining offer for Lemon Bay Conservancy friends and supporters. Ruby Tuesday's restaurant located at the Port Charlotte mall, 1441 Tamiami Trail, space # 995, will donate 20% of each purchase (exclusive of tax and gratuity) to Lemon Bay Conservancy on **SUNDAY, DECEMBER 21, MONDAY, DECEMBER 22 and TUESDAY, DECEMBER 23.**

These days have been specially designated as "Lemon Bay Conservancy Dining for Dollars"

days. All you have to do is mention to your server that you are a friend of LBC and present the coupon below before you place your order.

You may clip this coupon below or go to www.lemonbayconservancy.org, click on "Ruby Tuesday" and print out your own coupon. We hope you will find this an enjoyable and tasty way to support our organization!



LEMON BAY
ESTABLISHED 1971
CONSERVANCY